



**November News
from
Marianne Overton MBE**

**Lincolnshire County Council
LCC and North Kesteven
District Council NKDC**

Wishing you all the very best!

This is my personal newsletter to let you know what I am doing on your behalf and to keep in touch with you. Let me know if I can help with anything.

Floods

We suffered two severe rainfalls in storms this month. A shocking 90mm or two months of rain fell in 24 hours and our drains did not cope. The bridge over Welbourn Road near Brant Broughton blocked. People and animals suffered. Houses, crops and barn's full of grain were damaged. Emergency services could not get to everyone in need, highways attended 300 incidences and the Environment Agency are on 3 shifts and 24 hour cover. Huge thanks to a fantastic community effort, helping to keep everyone safe. Significant preparations, including clearing drains and sandbag distribution have also been a vital help, much-needed in some villages, thank you.



Emergency Financial Assistance for flooding

Flooded households can apply for £500-£1000 from our District Council and rate relief for 3 months. Small businesses can apply for £2,500 from the *Business Recovery Grant*. Up to £5,000 is available to make homes and businesses more resilient in future under the *Property flood resilience repair scheme* For advice ring 0800 232 1271 You need to take photos and report the flooding quickly so the damage can be inspected. 01522 782082. "...In the event of any flooding following rainfall from 17 October until 16 November 2023. The Permanent Secretary has activated this Scheme of Emergency Financial Assistance to District Councils which includes an immediate payment of £1,000 to householders as practical assistance to those who have suffered severe inconvenience, to help make homes habitable as quickly as possible." The Announcement is [here](#). The forms are [here](#). General advice is [here](#).

Please continue to report blocked drains on the map on www.fixmystreet.com or ring 01522 782070. Even during a flood event, staff are manning the reports, but in an emergency, ring 999.

Some of our villages have written their own "Emergency Plan" and kept it up to date. The County Council are happy to advise and provide a template.



The Disney comes from Norton Disney!

In celebration of 100 years of Walt Disney's amazingly successful company, the company sent what became an afternoon tea for the village of Norton Disney. Walt's ancestors came with William the Conqueror in 1066 and settled in what became Norton Disney. Walt found the family crest of his reputed ancestor Sir William d'Isney, on the 14th-century figure's tomb in Norton Disney's St Peter's Church, which itself dates back to the 11th century. A special original cartoon was sent to mark the occasion. Thanks to volunteers and residents for another great event.



Villages Plant



If you can spare a little time chatting and exercising in the fresh air, you will like this group. Thanks to Ann and Paul Broadbent and Rory Booth for getting it going so well, working in Brant Broughton, Leadenham and Welbourn. www.villagesplant.com

New requirements for all developers

Anyone wanting to develop land will need to show how their plans fit with policies listed in the latest Local Plan, adopted in April. You can comment on the proposed list before midnight on 13th December. <https://www.central-lincs.org.uk/consultations> The online Response Form is [here](https://www.central-lincs.org.uk/consultations) to e-mail to talkplanning@central-lincs.org.uk.

Published by Marianne Overton MBE, Hilltop, Welbourn, Lincs
01400 273323 or 07920 235 364

Success - Railway Ticket Offices stay open!

Sleaford and Grantham Station ticket offices were planned to close. Vulnerable and less able passengers would struggle and not get the best value ticket combination or advice, while staff can point to it right away.

At North Kesteven District Council, the successful campaign was led by the members of the Lincolnshire Independents, taking the issue to full Council and also to scrutiny, calling for key figures to be directly questioned. We also wrote directly to the minister, adding our voices. This week the minister announced a u-turn. Lincolnshire Independent, Ann Mear said that "Scrapping this cruel plan demonstrates people power. It tells people to fight for what is right and that in a democracy it is always possible to win".

Planning - Sleaford Market Square

The proposals are coming to planning on Tuesday 7th. The planning report for decision is [here](#), starting at page 22. Please let me know your thoughts on the matter.



Solar Arrays

Comments continue. The main issues raised so far is the size of the projects, well over 2,000 acres and loss of country landscape that is currently growing crops, whilst other measures such as insulation and roof panels are still not in place, even on large commercial buildings. Our Parish Councils are doing an amazing job working through all of the issues in detail. If you would like to be part of that group, please let me know.

Quarries

Our County Council Planning Committee had a site meeting to view a quarry near Market Deeping. The officers argued that quarrying within 25m of a dwelling was acceptable. The current limit is 200m. They thought a row of straw bales would be good enough. What do you think?



Should Greater Lincolnshire have a Mayor?

The previous consultation in Lincolnshire made clear that people do not want an elected Mayor for the whole of North, Northeast Lincolnshire and Lincolnshire. We are a population of 1.1bn people spread over 7000km². If we thought it was hard to influence County Council to provide good roads and services in our local areas, how much harder if the area is bigger still, with two thirds of the voting Councils being North and Northeast Lincolnshire? The additional layer of Government would raise its own taxes on top of what we currently pay. Three District Councils would have no vote, but four of the seven may be allowed to sit at the table. In other areas, the relatively small amounts of money offered for the extra services was noticeably swallowed up in administration and redundancy payments. We want devolution of powers and money to our Councils as they are, without costly reorganization.

Supporting Local Services



Huge thanks to tireless warriors working to keep Grantham A and E open, a battle bravely fought but finally lost on Halloween night. The A and E will now remain closed, putting increased pressure on Lincoln Hospital which is already seriously struggling, as we know. Grantham is formally downgraded to an urgent care centre, like Newark. Urgent care is described as non-life-threatening illness or injury needing urgent attention.

Supporting Local Business: Calling our Experienced and Budding Local Artists

"We are at present planning our Autumn - December Classes at Appleyard Studio, Laburnum House (by the bus shelter) Wellingore A607 Suggested classes stand at Rag Rug Making, Printing for Christmas and Painting. Please book by telephone 07850910497 stating preferred days and times you wish to study. We usually set these on Tuesday, Wednesday or Thursday evenings 7-9 but afternoons available if enough people request them 2-4 or 1-3 possible. Classes limited to 8 persons. Cheers Kathleen."

Supporting Heritage: Wildlife Reserves



Frampton Marsh, an RSPB Reserve I remember being created from wet farmland, has become one of the best in the country. It attracts huge numbers of wild birds on migration and rarities blown off course. During Autumn and Spring migration a hundred bird species are recorded in a day. Visiting is free for members or £3 /visit with a good café.

Metheringham Air Museum



There is a brilliant place to explore RAF heritage of Lincolnshire. The Metheringham Air museum's range of exhibits give visitors a real sense of what it was like to live and work on an RAF station during the war. The atmospheric former wartime Gymnasium houses the memorial room, larger exhibits, the restored wartime pilot training simulator, the Link Trainer and the Food for Thought exhibition. The old wartime ration store is home to the permanent exhibitions which share the stories of the men and women who came from across the globe to serve at the airfield. This small museum is open at weekends and Wednesdays between the end of March and October. It is hosted on Martin Scoley's Farm and run by volunteers, making a beautiful job of restoring and maintaining the aircrafts.

Local Children enjoy Halloween Fungi Hunt

Families enjoyed a Halloween Fungi Hunt in Twyford Wood near Colsterworth. Ray Halstead is the County Recorder assisted by David Feld. I hosted the event with my committee member hat of the Royal Society of Biology and co-leader of Wildlife Watch, the junior part of the Lincolnshire Wildlife Trust and the RSPB with Jean Martin and Jenny and Tim Giles. Record attendance of forty meant we had both family and adult groups. Following the wet weather, fungi were in abundance with more than 74 species identified in just two hours.

For a calendar of future monthly events, please contact Jean Martin jcmartin0448@gmail.com or me, Marianne Overton on 07920 235 364.



Scampton and Asylum Seekers

I have lobbied hard nationally against large numbers of young asylum seekers being placed at Scampton, without support services and also concerned about their safety. It also prevents local investment plans. The Government is however, going ahead. The migrants will be living in portakabins on the runway, eight to a cabin.

The RAF buildings are too degraded to convert for accommodation, but are being used for a laundry etc. The Government has given an extra £2m for policing, £1m for the asylum seekers. They will also have their own nurse-led health care and transport to Lincoln. We await the outcome of West Lindsey's judicial review.

In the meantime, I have a briefing on our other refugees from Ukraine, some still comfortably with families, and from other countries who have a right to be here, but are still needing support. I am arguing for the money for Councils to provide essential services and some is in hand. but finding eight bedroom houses for large families is a challenge.

Highways

The Highways boss came out again today for a second visit to see at first hand any outstanding items in my Witham Villages and Beckingham. Thanks to Parish Councils for helping me prioritise works and for those who kindly met me in each village. The work may take time to get in the schedule, but we are definitely making visible progress. Please keep reporting on www.fixmystreet.com as we have staff putting those reports through for action. I then pick up the larger works that need a higher level decision. Thank you for your work in helping to make our areas safer.

A huge thank you to our local volunteers

Thank you for all you continue to do in our communities and your kind support. Good luck in all you do.

Best wishes.



Marianne

Marianne Overton MBE

Working together for people and planet

November

2nd Char and Chat at Welbourn Village Hall £1.50 2-4pm

2nd-4th Marie Curie Christmas Bazaar Hemswell 10-4pm

4th Table Top sale Welbourn Village Hall £6/table Book with Pauline on 01400 269254 2-4pm

4th Norton Disney Bingo Eyes down 7.30pm

5th Coleby Car Boot Sale

7th Bassingham Lunch Club, noon, Hammond Hall, Bassingham Book with Carmen 01522 788996

8th Wellingore and District U3A Protection against witches, elves and the Devil! 10.30am

9th Norton Disney Tea and Chat, Village Hall 2-4pm

10th Comedy Night at Leadenham Village Hall £10 8pm, bar from 7pm 0800 026 0766

12th Remembrance Services

15th Wednesday Club at Leadenham Tea, cakes and a chance to chat 2-4pm Hilary 01400 272835

16th Bassingham Garden Group Hammond Tower Room – Rewilding the garden and festive nibbles/drink. 7.30pm

17th Fire Bingo Brant Broughton Vill Ha. Eyes down 7.30pm

18th Welbourn Coffee Shop Vill. Ha. 10am-noon

18th Navenby WI Christmas Bazaar @Venue 11am-3pm

21st Bassingham Lunch Club noon, Hammond Hall, Bassingham Book with Carmen 01522 788996

24th Navenby Christmas lights-on and market 5-8pm

25th Carlton le Moorland Coffee Morning Bassingham Brownies and Guides 10am-12

25th Withamside Pre-Christmas Coffee Morning in the Hammond Hall 10-12

26th Create and Craft, with West Kewsteven Wildlife Watch and RSPB Explorers Welbourn Village Hall 10-12

30th Withamside waste Not Want Not donate 9.30-11.30am, collect 1-3.30pm at St Michael's Bassingham

December

2nd Matilda, the film in Carlton Le Moorland Hall £6.50/£4.50 Book clmvillagehall@gmail.com 4.30pm

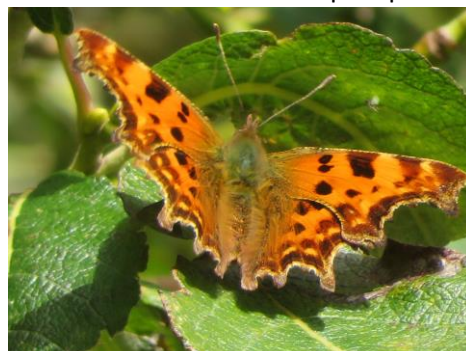
9th Wreath-making Carlton le Moorland £30 Book 07951 438 875 6.30pm

10th Children's Christmas Party at Welbourn Vill. Ha. With West Kesteven Wildlife Watch £2.50 Book

16th Norton Disney Coffee Morning 10-12

16th Carlton le Moorland over 60's Christmas lunch 1pm 01522 788303 before Dec 7th latest

16th A family musical eve with Carols and Christmas songs. St Mary's Church, Carlton le Moorland £5 including mulled wine and mince pie 7pm



Remember Summer?

Comma Butterfly

Some Useful information

Lancaster Gateway, Norton Disney

This inspiring epic is remembering the sacrifices and how people fought so that we could have freedom today.
Donations here. <https://www.bombergatewaytrust.co.uk/>

Take the Bus Campaign

Buses are still only £2 per journey, any journey.
Timetables and info is here. <https://lincsbus.info/> or call 0345 234 3344. The Transport Helpline is 0345 456 4474.

Old Printer Cartridges for Charity

Richard Wilson wants you empty printer cartridges at 11 Chapel Lane, Navenby to raise funds for the Juvenile Diabete Research Foundation. Seal them in an envelope and pop them through his door. Or ring 01522 810373

Support from Local Charities

Sir Christopher Nevile/Summers Charity for residents of **Aubourn, Haddington and Thurlby**. For people who need a bit of help. Local Trustees. Apply 01522 788236
Carlton le Moorland Young People's Trust 07943 760 155

Navenby Heritage Trail

Have you explored the 2.5km Navenby Heritage Trail?

Useful Contacts

Healthy Eating

Local shops who deliver

East Midlands Dairy 01636 614760
Nick Streeter's fish etc. 01400 272547
Grocery Paul Barton 07970 115351
Greens, Bassingham 01522 788200
Welbourn Post Office and Stores 01400 272242

Pub and takeaway meals

The Joiner's Arms, Welbourn 01400 279356
The Red Lion, Wellingore 01522 810071
Marquis of Granby, Wellingore 01522 811100
The Kings Head, Navenby 01522 810367 open
The Tempest, Coleby 01522 810258
Thorold Arms, Harmston 07971 029 534
The Bugle Horn, Bassingham 01522 789773
The Five Bells, Bassingham 01522 788269
The White Hart, Carlton le Moorland 01522 788893
Generous Briton Brant Broughton Tues-Sat 01400 272119
Black Swan, Beckingham 01636 626474
Akash Indian Takeaway 01522 811126 Navenby
Navenby Chinese Takeaway 01522 810773

Cooked meals

Andy's Fish and Chips Van Bassingham Tues, Skellingthorpe Wed, Caythorpe Thurs 5-8pm
Hot lunches for senior citizens 01522 404025 Bassingham, £5 for two courses. Book by Sunday 5pm
Primary hot lunches Thurs and Sat 01522 788488
Age UK will deliver 21 small single person meals for £20, plus £7 delivery 03455 564 144
Hollynelstropcatering@gmail.com - weekly meal boxes
Sarah's Bakes and cakes caron@awharrison.com Amazing @Sara's Cakes & Bakes

Business Advice is free from NKDC Phil Means on 07920 472671 www.businessnk.co.uk @BusinessNK
www.businesslincolnshire.com
Business www.lincolnshire.gov.uk/grants-funding

First Aid Course online

St John Ambulance stjohnambulance@email.sja.org.uk

Parish Offices for local support and information

Navenby Venue Tuesday to Friday 10-noon
Witham Office at Bassingham in the Hammond Hall, LN5 9HQ 01522 789758 Open Mon, Wed, Thurs 9-1pm
Local Police Statistics <https://www.police.uk/>

Access to Wellbeing Services and Care

Covid Helpline continues 01522 782189
The Carers service 01522 782224
carers_team@lincolnshire.gov.uk
Support for Adult care is available 01522 782155
Supporting People 01522 782140 www.wellbeinglincs.org
Umbrellas events supporting all ages with additional needs and their families umbrellaslincoln@outlook.com
#EveryMindMatters advise on coping with anxiety and improving your mental health: <https://qoo.ly/35q2xs>
Mental health www.connecttosupport.org
Bereavement Helpline St Barnabus 0300 303 1897
tracy.tuffs@stbarnabashospice.co.uk
Lincolnshire YMCA 01529 301965
www.citizensadvice.org.uk 0800 1448444 free 8am-6pm
www.getsafeonline.org Keeping safe online
Know anyone suffering memory loss? Contact
Wheelchair loan: No Name Lodge Geoff Nelson 788213

Church Work and Services

www.graffoechurches.co.uk
sara.davies@lincoln.anglican.org 07768 706952
www.withamsidechurches.org.uk
Navenby Methodist Church 01522 685226
<http://lincolnmethoist.org.uk/circuit-services-weekly-live-stream/> David.lawton@methodist.org.uk

Venue Finder

420 Lincolnshire Village halls are registered here.
www.lincscommunitybuildings.org.uk

Useful Advice for Charities

<https://www.charityhowto.com/blog/>

To protect a house or business against flooding

<http://www.marydhonau.co.uk/information/how-do-i-protect-my-home-from-flooding/>

Roadworks www.lincolnshire.gov.uk/transport-and-roads/overnight-roadworks
roadworks@lincolnshire.gov.uk Twitter #lincsc roads

Business Support

www.businesslincolnshire.com
www.teamlincolnshire.com do monthly webinars

Community Larders

Sleaford Community Larder at the Newlife Centre
<http://www.communitylarder.co.uk/>

Help save lives and keep countryside clean

Report Potholes 01522 782070

<http://www.lincolnshire.gov.uk/potholes>

Or use "Fix my street" on line – works well.

<http://www.FixMyStreet.com>

Report Litter 01529 414155

customer_services@n-kesteven.gov.uk

Report illegal parking 01522 511142 or

ParkingServices@lincolnshire.gov.uk

Adult Concern 01522 782151

Police: Sgt Ken Whyte, 101 or www.police.uk

07973 846537/235/5827

Floodline 24/7 on 01522 782082

Volunteer locally www.rivercare.org.uk

Wild Things Rescue 01526 578579 9-9 every day

www.wildthingsrescue.uk

Highways, Transport and Travel

Good newsletter from lincscountycouncil@gmail.com

Roadworks www.one.network lincolnshire.roadworks.org

Transport www.accesslincoln.co.uk shows all the options,

or ask accesslincoln@lincolnbig.co.uk 01522 581906

Call Connect 8.30am - 7pm Weekdays and to 5pm

Saturdays 0345 234 33 44 or 01522 553143

<https://lincsbus.info/callconnect/>

Dial a ride 01522 544983 Disabled door to door

Car-sharing www.lincshare.co.uk

Trains www.thetrainline.com

Facebook Hykeham town rural NPT T @hykeham NPT

Buses www.lincsbus.info or Traveline 0871 200 22 33

Mobile Library 01522 782010 or www.lincolnshire.gov.uk

Planning on line

See and comment on applications to get your voice heard.
Search "planning on line north Kesteven"

Local Plan www.central-lincs.org.uk 01529 308084

Village websites

Withamstaple.com; youbassingham.co.uk
www.carlton-le-moorland.parish.lincolnshire.gov.uk
www.facebook.com/groups/WhatOnInNocton
www.facebook.com/groups/455116074527966/ Navenby
and Wellingore business parishes.lincolnshire.gov.uk
www.harmston.info www.navenby.net
dunstondossier.org.uk nocton.blogspot.co.uk
Welbourn, Leadenham and Coleby are on the LCC site
E.g. <https://leadenham.parish.lincolnshire.gov.uk>
Branston www.tucann.co.uk/the-sheepwash-times
Branston Library 01522 880426
www.mrssmithscottage.com

County Events- Good web page here

Search Lincolnshire County Council out and about or use
www.lincolnshire.gov.uk search on "county news"

Mrs Smith's Cottage

East Road, Navenby LN5 0EP

Open Weekends Friday to Monday noon til 4pm

Entrance £3.50/£2

Step into a time capsule into the life of Mrs Hilda Smith
who lived a simple and principled life here to 102.

The Cottage is owned by North Kesteven District Council
and manned with the help of local volunteers – enjoy!

